

## Fig. 262 (Formerly Afcon Fig. 500)

### Strap Short

**Size Range:** 1/2" through 4"

**Material:** Carbon steel

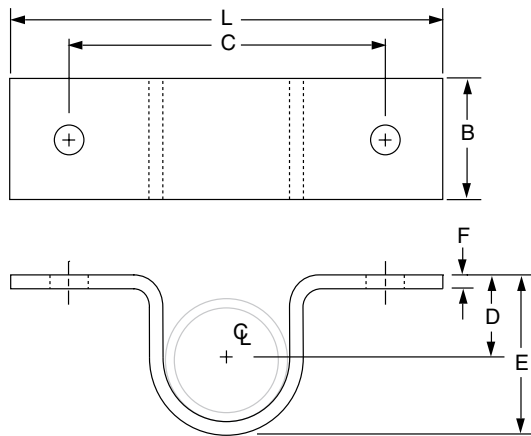
**Finish:**  Plain or  Zinc Plated (Hot-Dip Galvanized optional)

**Maximum Temperature:** 650° F

**Approvals:** Complies with Federal Specification A-A-1192A (Type 26), WW-H-171-E (Type 26), ANSI/MSS SP-69 and MSS SP-58 (Type 26).

**Ordering:** Specify pipe size, figure number, name and finish.

**Note:** The acceptability of galvanized coatings at temperatures above 450°F is at the discretion of the end user.



**FIG. 262: DIMENSIONS (IN) • LOADS (LBS) • WEIGHTS (LBS)**

Pipe Size	Max Load		Weight	Screw or Bolt Size ■	L	B	C	D	E	F
	w/Lag Screws	w/Bolts to Steel								
1/2	300	410	0.20	Two #18 x 2 steel wood screws or two 3/8" bolts to steel	4	1 1/4	2 3/4	1/2	1 1/8	1/8
3/4			0.23		4 3/8		3 1/8	1 1/16	1 7/16	
1			0.26		4 3/4		3 1/2	1 1/16	1 5/8	
1 1/4			0.36		5		3 3/4	1 1/16	2 1/8	
1 1/2			0.54		5 3/8		4 1/8	1 3/8	2 1/2	
2			0.60		6 3/8		5 1/8	1 1/4	2 3/4	
2 1/2	450	610	1.40	Two #18 x 3 steel wood screws or two 3/8" bolts to steel	6 13/16	1 1/2	5 9/16	1 3/4	3 5/8	1/4
3			1.60		7 5/16		6 1/16	1 7/8	4	
3 1/2			1.80		7 13/16		6 9/16	2 3/16	4 5/8	
4			1.90		8 3/8		7 1/8	2 3/8	5	

■ Screws or bolts not included

PROJECT INFORMATION		APPROVAL STAMP	
Project:		<input type="checkbox"/> Approved	
Address:		<input type="checkbox"/> Approved as noted	
Contractor:		<input type="checkbox"/> Not approved	
Engineer:		Remarks:	
Submittal Date:			
Notes 1:			
Notes 2:			