



# SPECIFICATION SHEET

## 201-322

### FALCON™ BASE35 60" DUSTER COAT

- Features a detachable hood
- Snap front and take up snaps at the wrists
- Corduroy lined collar for comfort
- A cape ventilated back for air flow
- Coat splits in the back and can snap around each leg to form chaps

### APPLICATIONS

- Rainy work conditions
- Construction
- High municipalities
- Shipyards
- Agricultural chemical spraying
- Industrial plant maintenance

### CARE INSTRUCTIONS

Wipe clean with damp cloth. Do not dry clean, machine wash or iron. Line dry away from heat.

### TECHNICAL DATA

|                 |   |
|-----------------|---|
| MATERIAL        | PVC/Polyester, Corduroy                   |
| CONSTRUCTION    | 0.35mm PVC on polyester                   |
| COLOR           | ■ Black                                   |
| SIZES           | S - 7XL                                   |
| PACKAGING       | 1 set per polybag; 10 per case            |
| CASE DIMENSIONS | 9.8" x 12.2" x 13.4" / 25cm x 31cm x 34cm |
| CASE WEIGHT     | 28.6lbs / 13kg                            |
| COO             | China                                     |

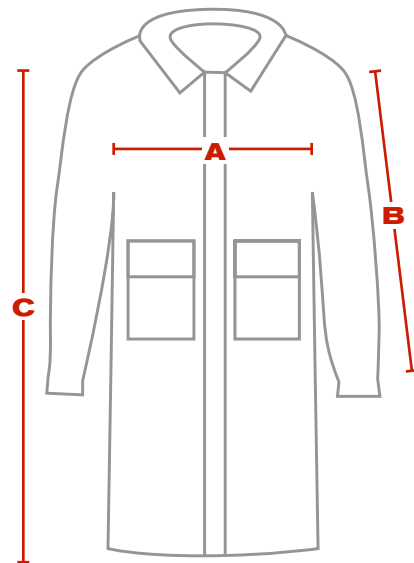
### BARCODES

| ITEM          | BAG            | CASE           |
|---------------|----------------|----------------|
| ■ 201-322/S   | 01616314208705 | 02616314208704 |
| ■ 201-322/M   | 01616314208712 | 02616314208711 |
| ■ 201-322/L   | 01616314208729 | 02616314208728 |
| ■ 201-322/XL  | 01616314208736 | 02616314208735 |
| ■ 201-322/2XL | 01616314208743 | 02616314208742 |
| ■ 201-322/3XL | 01616314208750 | 02616314208759 |
| ■ 201-322/4XL | 01616314208767 | 02616314208766 |
| ■ 201-322/5XL | 01616314208774 | 02616314208773 |
| ■ 201-322/6XL | 01616314208781 | 02616314208780 |
| ■ 201-322/7XL | 01616314208798 | 02616314208797 |



### DIMENSIONS (in/cm)

|          | S          | M          | L          | XL          | XXL        | 3XL         | 4XL        | 5XL        | 6XL        | 7XL        |
|----------|------------|------------|------------|-------------|------------|-------------|------------|------------|------------|------------|
| <b>A</b> | 49 / 124   | 52 / 132   | 54 / 137   | 57 / 145    | 60 / 152   | 62 / 157    | 64 / 163   | 66 / 168   | 68 / 173   | 70 / 178   |
| <b>B</b> | 28.5 / 72  | 30 / 76    | 31.5 / 80  | 32.5 / 82.5 | 33.5 / 85  | 34.5 / 87.6 | 35.5 / 90  | 36.5 / 93  | 37.5 / 95  | 38.5 / 98  |
| <b>C</b> | 58.5 / 149 | 58.5 / 149 | 58.5 / 149 | 58.5 / 149  | 58.5 / 149 | 58.5 / 149  | 58.5 / 149 | 58.5 / 149 | 58.5 / 149 | 58.5 / 149 |



**PROTECTIVE INDUSTRIAL PRODUCTS, INC. | BRINGING THE BEST OF THE WORLD TO YOU®**

AMERICAS: (800) 262-5755 • (518) 861-0133 | EUROPE: +34-96182-41-48 | AMEA: (ASIA, MIDDLE EAST, AFRICA) 852-2475-9228 | [www.pipglobal.com](http://www.pipglobal.com)

This document and the information contained herein is the property of Protective Industrial Products, Inc. (PIP) and may not be used or reproduced without permission. Product users should conduct all appropriate testing or other evaluations to determine the suitability of PIP products for a particular purpose or use within a particular environment. PIP DISCLAIMS ALL WARRANTIES OTHER THAN AS EXPRESSLY PROVIDED.