

DIVISION: Industrial

UOM: CS

UNITS PER INNER: N/A

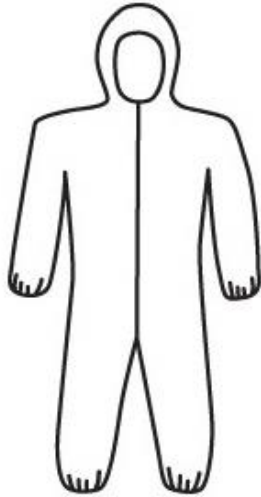
UNITS PER CASE: 25

MIN. ORDER QTY: 1 CS

ITEM NAME: PosiBA Coverall Hood, El.Wrist&amp;Ankle

AVAIL. SIZES: Medium, Large, XLarge, 2XLarge, 3XLarge, 4XLarge, and 5XLarge

DESCRIPTION: Protective Clothing Posi Wear BA - Microporous Coverall, zipper front w/Elastic Wrist/Ankle and attached Hood



PosiWear BA: Breathable Advantage - Proprietary technology against dry particulates and liquid sprays without sacrificing breathability.

**Features and Benefits:**

- Passes U.S. ASTM 1670 standard for blood penetration.
- Passes NFPA 99 Antistatic test
- When extra protection is needed this attached hood and latex free elastic wrist and ankles does the trick to keep dirt and debris out.
- ANSI Sized for a wide range of motion.
- Extremely low linting.
- Elastic waistband for improved fit

**Keywords:**

Clothing, Apparel, Coverall, Posiwear, Breathable, elastic wrist, ankle, hood, disposable clothing, Advantage, BA, Microporous, zipper, manufacturing, pressure washing, painting, resurfacing, fiberglass, safety, protection, West Chester

**Applications:**

Manufacturing, pressure washing, painting, resurfacing or fiberglass handling

SKU	Pc UPC	Pc Wgt	Inner Pack GTIN	Master Pack GTIN	Inner Pack Dimensions					Master Carton Dimensions				
					L	W	H	Wgt	Vol	L	W	H	Wgt	Vol
3606/M	662909360625		N/A	10662909360622	N/A	N/A	N/A		N/A	15.2	12.8	11.2	11.4	1.66
3606/L	662909360632		N/A	10662909360639	N/A	N/A	N/A		N/A	15.2	12.8	11.2	13.1	1.72
3606/XL	662909360649		N/A	10662909360646	N/A	N/A	N/A		N/A	14.96	12.6	11.02	12.57	1.2
3606/2XL	662909360144		N/A	10662909360141	N/A	N/A	N/A		N/A	14.96	12.6	12.6	12.57	1.37
3606/3XL	662909360151		N/A	10662909360158	N/A	N/A	N/A		N/A	14.96	12.6	12.6	12.57	1.37
3606/4XL	662909360168		N/A	10662909360165	N/A	N/A	N/A		N/A	15.75	12.6	14.96	12.57	1.72
3606/5XL	662909360175		N/A	10662909360172	N/A	N/A	N/A		N/A	16	12.8	15.2	12.57	1.45

		Medium	Large	XLarge	2XLarge	3XLarge	4XLarge	5XLarge
Chest	+/-1"	24.4	26	27.6	29.1	31.5	33.1	34.6
Neck	+/-1"	23.6	23.6	23.6	23.6	23.6	23.6	23.6
Leg Inseam	+/-1"	28	29.1	29.5	30.3	31.5	32.7	33.5
Zippers for Opening	+/-1"	27.6	29.9	29.9	29.9	31.9	31.9	31.9
Hood Height	+/-1"	13.4	13.4	13.4	13.4	13.4	13.4	13.4
Waistband stretched	+/-1"	18.9	20.5	22.8	25.2	25.6	26	26
Sleeve Length	+/-1"	32.7	33.5	35	35.8	37	37.4	38.2
Length to waistband	+/-2"	22.8	22.8	22.8	24.4	24.4	25.2	25.2
Body Length	+/-1"	36.6	38.2	40.2	41.3	43.3	45.4	46.5
Sleeve Opening	+/-1"	7.1	7.1	7.1	7.1	7.5	7.5	7.5
Leg Opening	+/-1"	9.8	9.8	10.6	11.4	11.4	11.4	11.4
Waistband at rest	+/-1"	12.2	13.8	13.8	14.6	14.6	14.6	14.6