

DIVISION: Industrial

UOM: CS

UNITS PER INNER: N/A

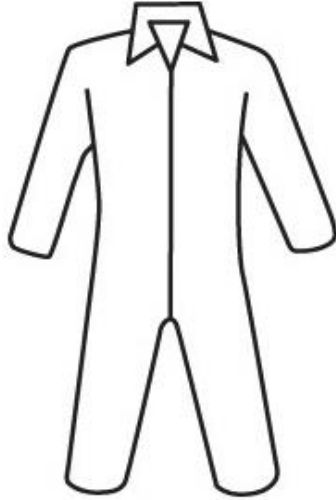
UNITS PER CASE: 25

MIN. ORDER QTY: 1 CS

ITEM NAME: PosiM3 - Basic Coverall

AVAIL. SIZES: Medium, Large, XLarge, 2XLarge, 3XLarge, 4XLarge, and 5XLarge

DESCRIPTION: Protective Clothing Posi-Wear M3 - White SMMMS Coverall, zipper front and collar



Proprietary SMMMS technology. Five layers of protection providing a high level of breathability and protection against dry particulates and water based light liquid sprays and splashes. Anti-Stat.

Features and Benefits:

- Full length zipper front and exceptional strength for easy donning.
- ANSI Sized for a wide range of motion.
- Serged seams.
- Elastic waistband for improved fit.

Keywords:

Clothing, Apparel, Coverall, Posiwear,m3, SMS, SMMS, SMMMS, zipper, industrial manufacturing, paper industry, food processing, heavy dust, disposable clothing, safety, protection, West Chester

Applications:

Industrial manufacturing, paper industry, food processing or where heavy dust environments are present.

SKU	Pc UPC	Pc Wgt	Inner Pack GTIN	Master Pack GTIN	Inner Pack Dimensions					Master Carton Dimensions				
					L	W	H	Wgt	Vol	L	W	H	Wgt	Vol
C3800/M	662909638007		N/A	10662909638004	N/A	N/A	N/A	N/A	N/A	16	13.2	12	9.1	1.84
C3800/L	662909538000		N/A	10662909538007	N/A	N/A	N/A	N/A	N/A	16	13.2	12	9.9	1.75
C3800/XL	662909438003		N/A	10662909438000	N/A	N/A	N/A	N/A	N/A	16	13.2	13.6	10.6	1.96
C3800/XXL	662909338006		N/A	10662909338003	N/A	N/A	N/A	N/A	N/A	16	13.2	13.6	11.2	1.92
C3800/XXXL	662909238009		N/A	10662909238006	N/A	N/A	N/A	N/A	N/A	16	13.2	15.2	12.2	2.1
C3800/XXXXL	662909138002		N/A	10662909138009	N/A	N/A	N/A	N/A	N/A	16	13.2	15.2	13.1	2.07
C3800/XXXXXL	662909537997		N/A	10662909537994	N/A	N/A	N/A	N/A	N/A	16	13.2	15.2	11.91	2.07

		Medium	Large	XLarge	2XLarge	3XLarge	4XLarge	5XLarge
Zippers for Opening	+/-1"	27.6	29.9	29.9	29.9	31.9	31.9	31.9
Leg Inseam	+/-1"	28	29.1	29.5	30.3	31.5	32.7	33.5
Sleeve Length	+/-1"	32.7	33.5	35	35.8	37	37.4	38.2
Sleeve Opening	+/-1"	7.1	7.1	7.1	7.1	7.5	7.5	7.5
Waistband stretched	+/-1"	18.9	20.5	22.8	25.2	25.6	26	16
Waistband at rest	+/-1"	12.2	13	13	14.6	14.6	14.6	14.6
Length to waistband	+/-2"	22.8	22.8	22.8	24.4	24.4	25.2	25.2
Pant Opening	+/-1"	9.8	9.8	10.6	11.4	11.4	11.4	11.4
Chest	+/-1"	24.4	26	27.6	29.1	31.5	33.1	34.6
Body Length	+/-1"	36.6	38.2	40.2	41.3	43.3	45.7	46.5
Neck	+/-1"	23.6	23.6	23.6	23.6	23.6	23.6	23.6