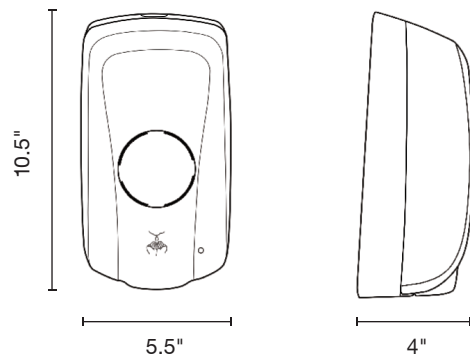
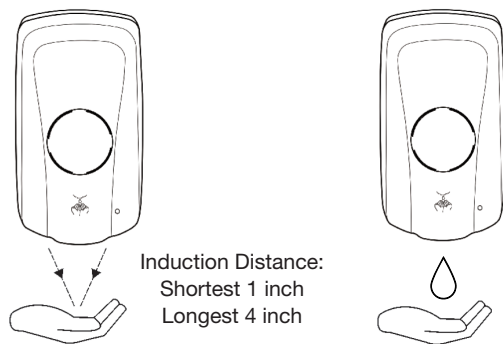


## PRODUCT SIZE:



## USAGE EXAMPLE:



## WARRANTY:

### One Year Warranty against Manufacturing Defects

Horizon Tool, Inc. warrants this product to be free of manufacturing defects in materials or workmanship for one year of the product, being owned by the original purchaser. This warranty is non-transferable. Original proof of purchase must be provided at time of claim.

### Limitations of this Warranty against Manufacturing Defects

- Damage or wear that occurs from normal use.
- Damage caused unintentionally.
- Damage caused by being mistreated.
- Damage caused by being intentionally or maliciously broken.
- Damage caused by an attempt to create a warranty failure.
- Damage caused by a failure to follow instructions of construction, installation and/or use.
- Damage caused by failing to heed the warnings on the packaging, on the product or in these instructions.
- Damage from using the product other than its intended use.
- Damage caused by modifying the original design of this product or any of its components.
- Damage caused by not storing or protecting the product away from the natural elements.

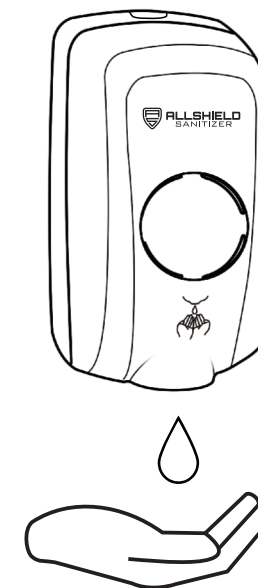
This warranty is in lieu of all other express warranties. Horizon Tool, Inc. will not be liable for consequential or incidental damages. Some states do not allow limitations on warranties. In such case, the above limitation may not apply. To the extent that this warranty statement is inconsistent with the local law, this warranty shall be deemed modified to be consistent with such law, under such local law, certain disclaimers and limitations of this warranty statement may apply to the customer.



[www.allshieldusa.com](http://www.allshieldusa.com)  
1-833-307-0523



## USER MANUAL



\* Read user manual before using this product.



## WARNING



DO NOT EXPOSE TO SUNLIGHT

DO NOT DROP

REMOVE BATTERY AND LIQUID WHEN NOT IN USE

CLEAN REGULARLY

DO NOT RINSE WITH WATER

DO NOT CLEAN WITH CORROSIVE SOLVENTS

DO NOT ALLOW DUST TO ENTER SOAP BOTTLE

KEEP AWAY FROM FLAMMABLE MATERIALS OR GASES

NEVER DISMANTLE, REPAIR OR MODIFY

CHECK BATTERIES REGULARLY

NEVER USE BATTERIES WITH CORROSION OR LEAKAGE

DO NOT USE IF CORROSION APPEARS ON ANY COMPONENTS

INSTALL DISPENSER ONLY IN A DRY, SUITABLE AREA

ONLY USE PROVIDED HARDWARE TO INSTALL

## INSTRUCTIONS FOR USE:

When the dispenser is connected to power, the LED will flash GREEN and RED to let you know it is functioning. When on standby, the LED will flash GREEN every five seconds.

Open front cover and press ON / OFF to turn the dispenser on or off. (ON: the LED will flash GREEN; OFF the LED will flash RED).

Press the button, the LED will flash GREEN once to indicate that the signal is received. It will discharge one dose.

Press the button, the LED will flash GREEN twice to indicate that the signal is received. It will discharge two doses.

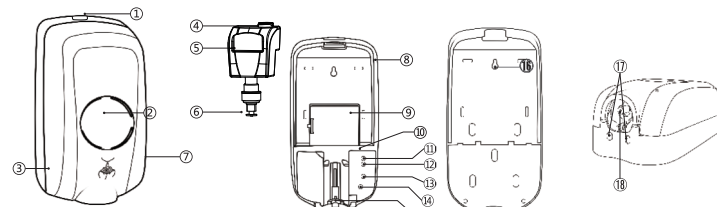
When used for the first time, test the sensor 5-8 times. The liquid can be discharged normally after the air is exhausted.

When battery power is low, the LED will flash RED.

## SPECIFICATIONS:

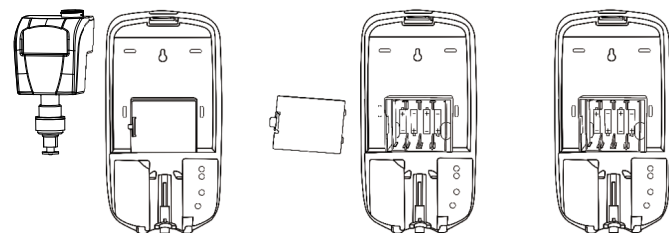
|                     |   |            |  |
|---------------------|---|------------|--|
| NAME:               | AllShield Automatic Dispenser   |            |  |
| MODELS:             | 22534 - 22535 - 22536   |            |  |
| INDUCTION WAY:      | Infrared Reflection   |            |  |
| INDUCTION DISTANCE: | Shortest 1 inch - Longest 4 inch  |            |  |
| MATERIAL:           | ABS   |            |  |
| CAPACITY:           | 34 ounce  |            |  |
| DOSE:               | 0.02 ounce  | 0.05 ounce |  |
| BATTERY:            | 4 or 8 AA Alkaline Batteries  |            |  |
| POWER ADAPTER:      | Input Voltage: AC100~240V 50/60Hz<br>Output Voltage: DC6.0V 2A (Optional, Not Included) |            |  |

## COMPONENT DESCRIPTION:



- ① Open button
- ② Visible window
- ③ Front Cover
- ④ Bottle cap
- ⑤ Bottle
- ⑥ Pump
- ⑦ Adapter socket
- ⑧ Bottom shell
- ⑨ Battery compartment
- ⑩ Internal unit
- ⑪ Once button
- ⑫ Twice button
- ⑬ ON/OFF
- ⑭ LED indicator
- ⑮ U-shape part
- ⑯ Screw hanging hole
- ⑰ Sensor light
- ⑱ Outlet

## BATTERY INSTALLATION:

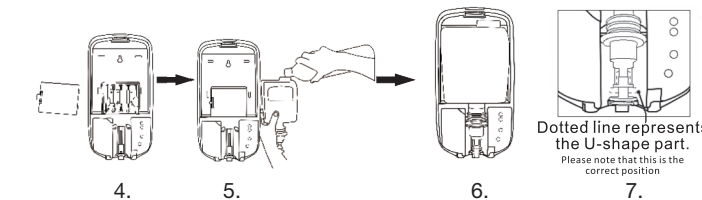
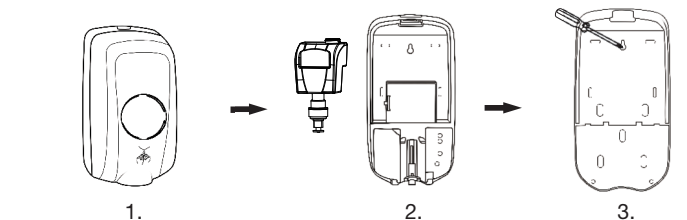


- ① Remove bottle
- ② Remove the battery compartment cover
- ③ Insert batteries

## INSTALLATION NOTES:

For installation keep a ground clearance of at least 12 inches below the dispenser. Only install dispenser in a dry, suitable area.

NOTE: If using stand, see stand installation instructions.



- 1. Press the upper button and open the front cover.
- 2. Remove the bottle.
- 3. Use the screw hole position on the bottom shell to align and mark with a pen to fix screws and hang dispenser.
- 4. Open the battery compartment cover and insert 4 or 8 AA alkaline batteries.
- 5. Pour liquid into the bottle (must remove bottle to add liquid).
- 6. Put the bottle into the dispenser vertically and parallel.
- 7. Pump head must be locked in the correct position of U-shape part.